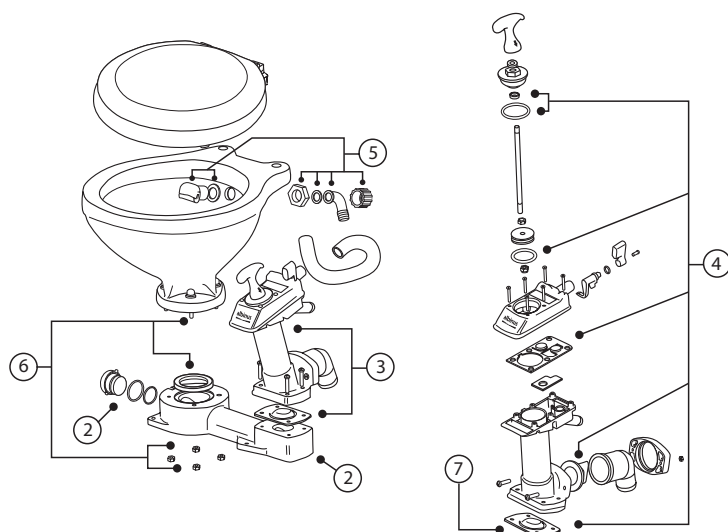


Spare Parts Manual Marine Toilets



Common spares

Part No.	Pos.	Description
07-91-057	2	Plastic base
07-66-018	3	Manual pump with base gasket
07-91-059	4	Gasket kit manual pump
07-99-060	5	Intake elbow 90°
07-91-061	6	Bowls gasket/screws
07-91-062	7	Check valve

Replacement seats

Part No.	Description
07-01-001	Marine Toilet Manual Compact
07-99-035	Compact seat
07-01-002	Marine Toilet Manual Comfort
07-99-036	Comfort Seat Slow Close
07-01-003	Marine Toilet Manual Compact Low
07-99-035	Compact seat



Hazard Risk

If the toilet is connected to **ANY** through-hull fittings that are below the waterline at any time, and if the toilet or pipework is damaged, water may flood in, causing the boat to sink, which may result in loss of life.

- After every usage; both seacocks (or secondary valves) **MUST** be shut.
- Whenever your craft is unattended, even if only for a very short period of time, both seacocks (even if secondary valves are fitted) **MUST** be shut.
- Ensure that **ALL** users understand how to operate the toilet system correctly and safely, including seacocks and secondary valves. Take special care to instruct children, the elderly and visitors!

Servicing

Preparation. Albinus manual toilets are user serviceable and no special skills or tools are required to employ them. - Flush the toilet according to the operating instructions for normal use and particularly ensure that all waste has left the discharge pipework, that the bowl is empty and that both seacocks are closed (even though secondary valves are fitted) - Mop-up any water which might come out of the system.

Seal replacement

If water begins to leak round the piston rod on top of the pump, it means that the seal assembly is worn out and should be replaced. To this purpose, you will have to act as follows:

1. You will need a service kit. Raise the handle to the top of its travel and wrap one turn of tape around the piston rod immediately below the handle to protect the piston rod.
2. Using pliers, grip the piston rod only around the tape, unscrew the handle and remove the bumper washer. KEEP HOLD OF THE PISTON ROD AS LONG AS THE OPERATION HAS BEEN COMPLETED, since if you let it go, it might fall inside the pump.
3. Unscrew the seal assembly and slide it off the piston.
4. Wrap one turn of tape around the thread at the top of the piston rod to protect the new seal then slide the new seal down the piston rod and tighten it.
5. Remove the tape from the thread. Replace the bumper washer and rescrew the handle on, holding the rod by gripping the piston rod on the tape.
6. Remove the tape from the piston rod

Overhaul

You will need a service kit containing all wearing parts - refer to the list of parts for further details.

Remove the pump assembly as follows:-

1. Loosen hose clips and disconnect the inlet hose and the link hose from the top of the pump
2. Remove the 2 screws which secure the discharge flange to the pump cylinder
3. Remove the 4 screws which secure the pump cylinder to the base, lift off the pump assembly and pick up the bottom valve gasket and the check valve

Dismantle the Pump assembly as follows:

4. Remove the 6 screws that secure the valve cover
5. Open the flush control before lifting off the valve cover assembly and picking up the top valve gasket and the valve seat

Reassemble the pump as follows:

6. Push on the new piston O-ring - Follow the servicing for seal replacement listed above and fit the new seal assembly, the piston assembly and the handle
7. Lubricate pump cylinder bore with Vaseline
8. Locate the valve seat on cylinder top, locate the top valve gasket on its pegs on the cylinder top and open the flush control before refitting the valve cover

Refit Pump assembly on the toilet as follows:

9. Locate the bottom valve gasket on its pegs on the base and locate the check valve in the discharge elbow
10. Secure the discharge flange to the pump cylinder before securing the cylinder to the base
11. Examine all hoses throughout their length for chafe, kinks and splits under hose clips, check all hose clips for corrosion and replace worn out or damaged parts
12. Reconnect all hose ends and secure them with their hose clips
13. Ensure that the base drain plug is securely placed

Operating instructions

Correct operation of the toilet is essential for the safety and comfort of your crew and boat.

The manually operated piston pump handles both rinsing/flushing and discharge; a flip switch puts the pump into either flushing or discharge mode.

First use:

1. For first time use, or after a long period of not being in use, the toilet can benefit for light lubrication.
2. Ensure that the inlet and discharge valves (full-bore, handle-operated sea cocks) are open
3. Half-fill the bowl with warm fresh water containing a few drops of vegetable oil or baby oil
4. Keeping the flush control lever in the "Shut position", pump out the warm water
5. After each operation, close both inlet and discharge valves!

Normal use:

1. Ensure that the inlet and discharge valves (full-bore, handle-operated sea cocks) are open
2. Before use, ensure that there is enough water in the bowl to prevent the toilet paper from becoming compacted at the bottom of the bowl. If the bowl is empty, move the flush control lever to the "Open" position and pump the handle up and down, until the flushing pump is primed and water enters the bowl. Then, shut the flush control.
3. Operate the pump with long, smooth strokes for efficient and easy operation
4. During use, pump as necessary as to keep the contents of the bowl low enough for comfort.
5. After use, keep the flush control shut and pump until the bowl is empty
6. When the bowl is empty, open the flush control again and continue to pump until all waste has either left the boat, or has reached the holding tank (allow 7 complete up and down strokes per metre length of discharge pipework.)
7. Afterwards, shut the flush control and pump until the bowl is empty.
8. Always leave the bowl empty to minimise odour and spillage.

After use:**1. SHUT THE FLUSH CONTROL - CLOSE BOTH SEACOCKS****Cleaning**

Regularly flushing with clean (sea)-water is one of the most effective methods to keep the toilet clean and odor-free

- To clean the bowl, use any liquid or cream ceramic cleaner
- To clean the rest of the toilet, including the seat and lid, use a nonabrasive liquid cleaner polish with a dry cloth only.
- To disinfect the toilet, use a liquid disinfectant diluted in accordance with the manufacturer's instructions. It is possible to apply it to all parts of the toilet using a sponge or soft brush as necessary.
- After applying any cleaning or disinfecting agent, always flush well. **DO NOT ALLOW THESE AGENTS TO STAND IN THE SYSTEM** because strong detergents stay on the inside of the system and burn through the rubber seals of the pump, invalidating the warranty.



NOTE: Do not put any of the following into the toilet: Sanitary Towels, Wet Strength Tissues, Cotton Wool, Cigarettes, Matches, Chewing Gum or any solid objects, Petrol, Diesel, Oil, Solvents of any kind or water that is more than hand warm. Do not put anything, other than toilet paper, in the toilet unless it has passed through your body!

Warranty

Two year limited warranty.

**Waste handling & material recycling**

At the product's end of life, please dispose of the product according to applicable law. Where applicable, please disassemble the product and recycle the parts according to material.

Albin Group

since 1928

Albin Group Marine AB

Kämpevägen 17
553 02 Jönköping, Sweden

info@albin.group
www.albin.group